

WE KNOW HOW

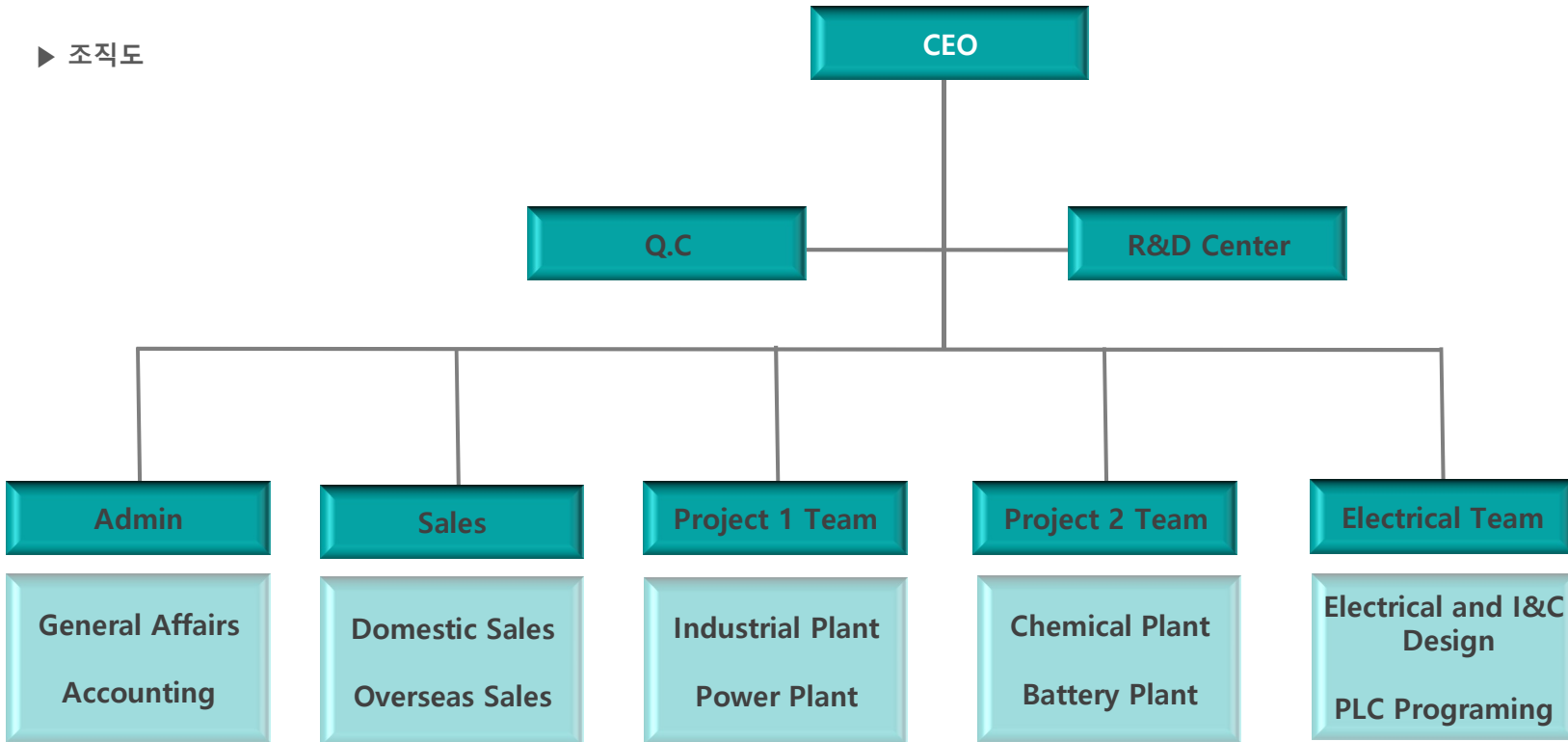
산업현장에 다루고 있는 BULK SOLID MATERIAL 하역,저장,계량,공송, 혼합, 포장, 출하 공정을 종합적으로 고려한 분체 플랜트를 E.P.C(ENGINEERING, PROCUREMENT, CONSTRUCTION) 형태로 수행하는 플랜트 엔지니어링 전문기업 입니다. 독자적인 기술력을 확보해 국내 뿐만 아니라, 해외에서도 높은 기술수준을 인정 받아오고 있습니다.

지난 10여년 당사는 업계 최고의 기술 경쟁력과 패기로 승부하였고 마침내 분체플랜트 엔지니어링업계 강호로 도약하게 되었습니다. 지속적인 관심과 아낌없는 격려에 감사 말씀 드립니다.

▶ 기업개요

기업명	(주) 비티에스이엔지 [영문] BTS ENG Co., Ltd.		
본사주소	(08589) 서울 금천구 디지털로130, #914		
대표이사	이 명석	대표전화	02-867-6785
설립일	2008년 1월 30일	홈페이지	www.btseng.com
사업자번호	124-86-63061	법인번호	134811-0151340
기업형태	중소기업	업종	엔지니어링, 제조, 수출입업

▶ 조직도



▶ 정규직 : 20 명
▶ 계약직 : 30 명

사업장 소개

HEAD OFFICE	
	<p>설 립 2008년 1월</p> <p>주 소 서울특별시 금천구 디지털로 130 #914 (가산동 남성프라자)</p> <p>면 적 500 m²</p> <p>근무 인원 22 명</p> <p>주요 기능 사업총괄</p> <p>소유형태 자가</p>



FACTORY	
	<p>설 립 2008년 2월</p> <p>주 소 울산광역시 울주군 청량읍</p> <p>면 적 8,200 m²</p> <p>기능 제작</p> <p>소유형태 임대</p>

R&D CENTER	
	<p>설 립 2009년 6월</p> <p>주 소 충북 음성군 음성읍 한벌리</p> <p>면 적 3,300 m²</p> <p>기능 R&D</p> <p>소유형태 자가</p>

BRANCH in VIETNAM	
	<p>설 립 2018년 4월</p> <p>주 소 64 Nguyen Dinh Chieu Dakao Ward, Direct1 HCMC Vietnam</p> <p>면 적 100 m²</p> <p>기능 소유형태 임대</p>

회사 연혁



▶ 신용등급이력

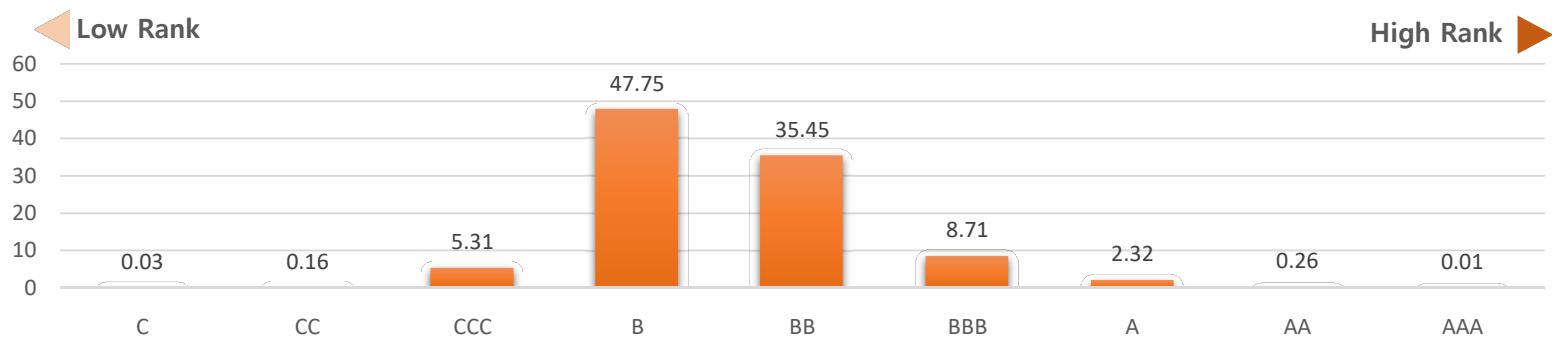
평가 년도	신용등급	현금흐름 등급	변동
2020 Year	BB-	CR-2	보합
2019 Year	BB	CR-2	보합
2018 Year	BB-	CR-2	보합

▶ 주요재무지표

2020년도 결산기준

주요지표	BTS ENG	ECR 업종평균	평가
순이익율(%)	5.4 %	5.0 %	Normal
부채비율(%)	76.4 %	100.6 %	Excellent
유동비율(%)	306.3 %	116.7 %	Normal

▶ 등급별 분포도



▲
BTS ENG (BB)

인증현황



면허 및 인증서	인증 번호	인증기관	인증 년도
사업자 등록증	124-86-63061	국세청	2008
공장 등록증	437702017391646	한국산업단지공단장	2020
품질경영시스템(ISO9001) 인증	QI7112/08	ICR 국제인증원	2008
환경경영시스템(ISO14001) 인증	E123119	ICR 국제인증원	2019
전문건설업면허	금천 10-10-1	금천구청	2010
해외 건설업 면허	No.557	해외건설업협회	2011
기업부설연구소 인정	제 2014115037호	기술진흥협회	2019
벤처기업 인증	제20200111342호	기술보증기금	2020
기술혁신중소기업(INNO-BIZ)인증	제170101-00959호	중소벤처기업부	2017
2012 대한민국 혁신우수기업 인증	제12-103호	중소기업청	2013
수출유망 중소기업 인증	제2020 서울-101호	서울지방중소벤처기업청	2021
기술협약서	Solimar Company	USA	2008
사업협약서	LB Industrial	USA	2014
사업협약서	SHW GmbH	GERMANY	2016
사업협약서	Herding GmbH	GERMANY	2016

인증현황



면허 및 인증서	인증 번호	인증기관	인증 년도
디자인등록증_ 플랜트 설비용 이송체	제30-1040812	특허청	2020
특허증_소각발전소에서 발행된 미세부진과 유해가스 동시 처리용 배기가스 처리시스템	제10-1841019	특허청	2018
특허증_벤츄리 이젝터를 이용하는 벌크 이송 시스템	제10-0988357	특허청	2009
특허증_마모 방지 코팅을 구비한 벌크 분배 시스	제13-0683122	특허청	2011
특허증_화력발전소에서의 FLY ASH HANDLING SYSTEM	제10-1355663	특허청	2014
특허증_비산재 처리용 하이브리드 공기압 수송 시스템	제10-2018-0046119	특허청	2019
특허증_그라핀 수소용기 제작 방법	제 10-2019-0131773	특허청	2019

R&D Center

분체 플랜트 엔지니어링 전문기업인 (주)BTS ENG는 충북 음성에 " Bulk Technical Solution R&D Center " 를 준공하여, 산업현장에서 다루어 지는 많은 종류의 원료의 물리적,화학적 데이터를 표준화 시켜, 고객님의 요구에 부응하는 최적화된 플랜트 엔지니어링을 할 수 있게 되었습니다.

충북 음성에 위치한 이 연구소는 현장에 적용되는 실제크기의 플랜트설비를 구축 하였으며, 이를 바탕으로 사전검증 데이터를 산출하여, 최적의 설계에 구현할 수 있는 실증연구소 입니다.

건축규모는 대지면적 3,300㎡, 연구동 990㎡ 입니다. 이를 바탕으로 국내를 넘어 세계적인 플랜트 엔지니어링 기업으로 성장할 수 있도록 연구에 매진 하겠습니다.



기술연구소 전경



분체이송 실증연구 설비



미세분진, 유해가스 처리시스템



컴퓨터실



연구 사무실



측정 분석실

특허

번호	특허 명	특허번호	인증기관
1	벤츄리 이젝터를 이용하는 벌크 이송 시스템	10-0988357	특허청
2	마모 방지 코팅을 구비한 벌크 분배 시스템	10-1263015	특허청
3	석탄 화력발전소에서의 FLY ASH HANDLING SYSTEM	10-1355663	특허청
4	소각발전소에서 발생된 미세분진과 유해가스 동시 처리용 배기가스 처리시스템	10-2017-0111480	특허청
5	발전소배출 비산재 처리용 하이브리드 공기압 수송 시스템	10-2018-0046119	특허청
6	그라핀 수소용기 제작 방법	10-2019-0131773	특허청

Overseas network



NO.	COMPANY NAME	ITEM	COUNTRY	CONTRAT DATE
1	LB INDUSTRIAL	Fly Ash Handling System	USA	2013.01
2	UCC	Bed Ash Handling System	USA	2013.10
3	SHW GmbH	Fuel Feeding System	Germany	2017.01
4	Herding GmbH Filtertechnik	Special Filter & Element	Germany	2017.05



산업플랜트



석유화학 플랜트

제지 플랜트

식품플랜트

제약 플랜트

2차전지 플랜트



양극재 소재 플랜트

음극재 소재 플랜트

전구체 소재 플랜트

전지셀 플랜트

발전플랜트



석탄화력 발전 플랜트

바이오매스 발전 플랜트

SRF 발전 플랜트

열병합 발전 플랜트

수행 범위



Engineering



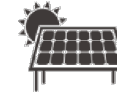
PFD , P&ID
Specification Sheet
Plot Plan Drawing
Piping Lay-out Drawing
As Built



Procurement



Purchasing
Fabrication Work
Logistic Service
Schedule Control
Quality Control



Construction



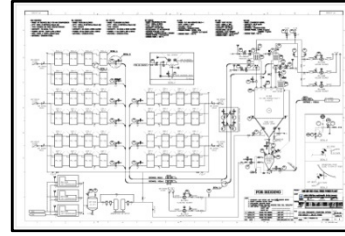
Installation
Site Supervision
Quality Inspection
Commissioning
Consultancy

수행 절차

Engineering



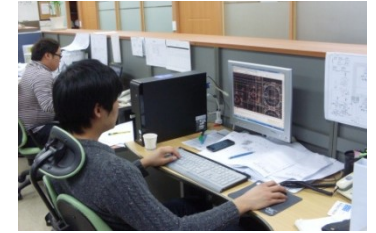
Concept Design



PFD / P&ID



Calculation



Drawing



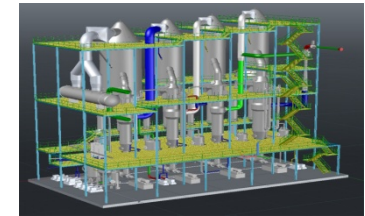
Fabrication



Purchase



Procurement



3D Modeling



Inspection



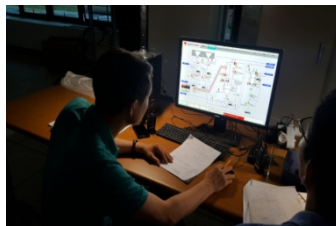
Transport



Construction



Structure Erection



Test & Commissioning



Electric Erection



Piping Erection



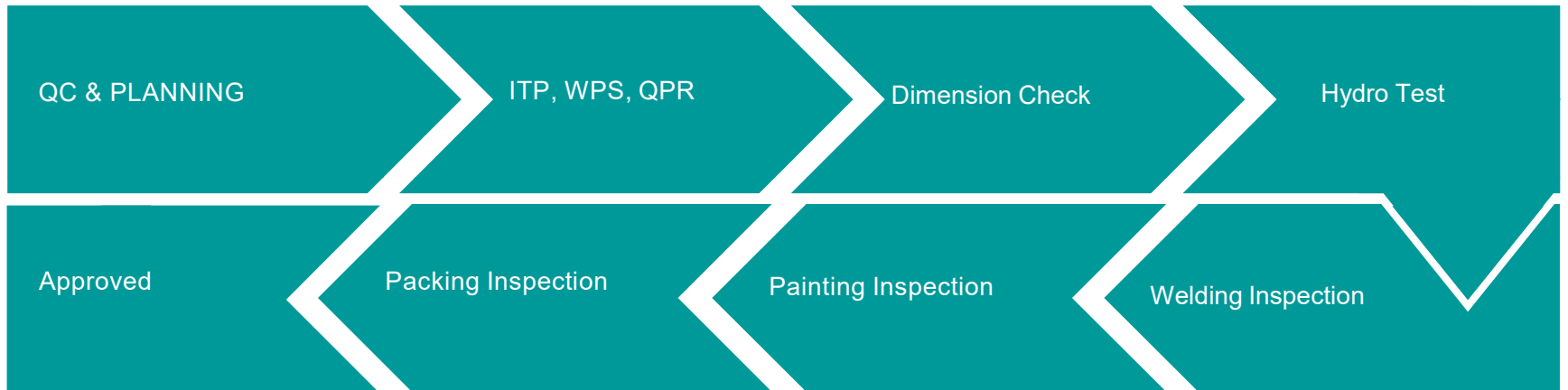
Equipment Erection

QC Process

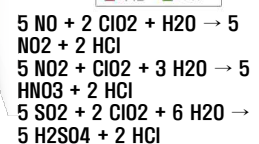
품질절차



INSPECTION AND TEST PLAN							
SUMP PUMP							
Project :							
S. No.	ACTIVITY	PARTIES INVOLVED	ACCEPTANCE CRITERIA	VERIFICATION DOCUMENT	RECORDING DOCUMENT	INSP. & ACCPT. SUB. I	INSP. & ACCPT. SUB. II
1.0 DOCUMENT REVIEW							
1.1	Review the technical submittal related to Sump Pump	CM	Project Specification	Manufacturer Technical submittal	Material Submittal	H	H
1.2							
2.0 MATERIAL RECEIVING							
2.1	Inspection of sump pump as per approved material submittal	CM/QC	Technical Specification	Supplier Material Submittal	Material Approval Request (MAR)	H	H
2.2							
3.0 INSTALLATION							
3.1	Inspection for the installation of sump pump as per drawing	SE/QC	Construction per drawings	Master Drawing & Manufacturer instructions	Inspection Report	H	S
3.2	Inspection for the connection of pump wiring	SE/QC	Construction per drawings	Master Drawing & Manufacturer instructions	Inspection Report	H	S
3.3	Inspection for the connection with valves & related accessories	SE/QC	Construction per drawings	Master Drawing & Manufacturer instructions	Inspection Report	H	S
3.4	Inspection for the electrical connection of Sump Pump	SE/QC	Construction per drawings	Master Drawing & Manufacturer instructions	Inspection Report	H	S
3.5	Inspection for the installation of weatherproof cap	SE/QC	Construction per drawings	Master Drawing	Inspection Report	I	S
4.0 PRE-COMMISSIONING & COMMISSIONING							



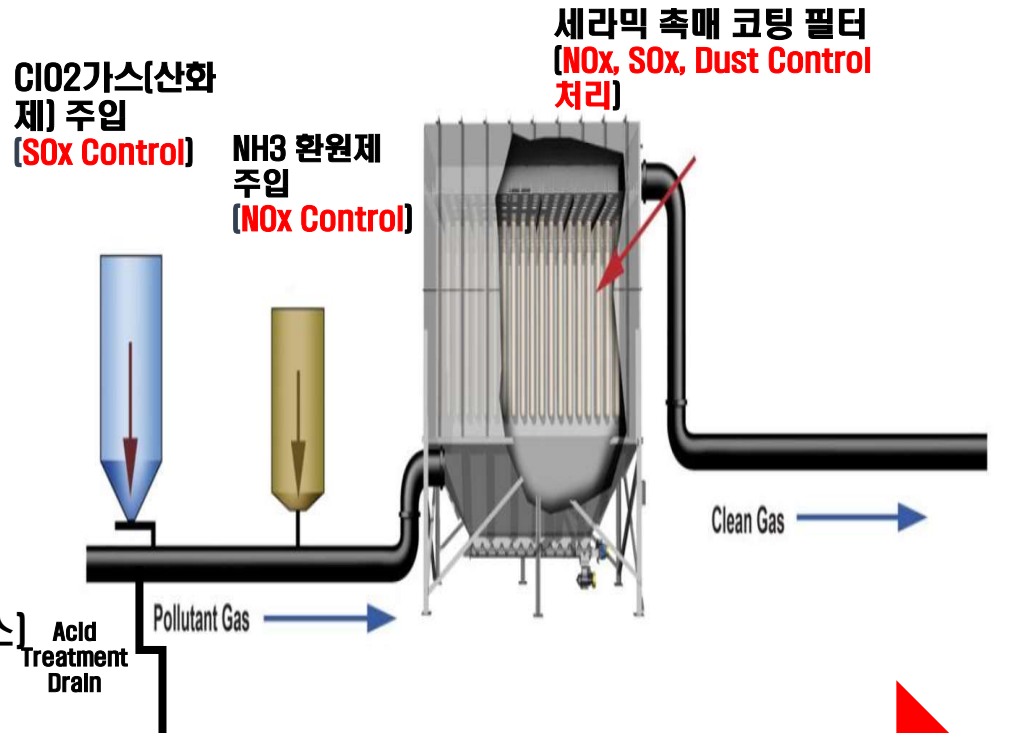
기술개요



세라믹 촉매 코팅 필터

집진용 세라믹필터에 오염물질 처리 촉매를 부가한 세라믹 촉매 필터와 공정 내 기능성 산화제를 주입하여 배기가스 내 유해물질(SOx, Nox, Dust)를 고효율로 동시 처리 공정

공정개념도



SOx 95%, NOx 95% 처리, Dust 99%처리

- 하나의 공정에서 미세분진과 유해가스(SOx, NOx)를 동시에 처리 가능한 고효율 일체형 공정
- 공정의 단순화를 통해 설치비, 유지비, 설치 장소 등이 대폭 감소되어 기존 공정대비 경제적 이점 확보 가능

Reference in Power Plant

* PERFORM E :Engineering P : Procurement C : Construction

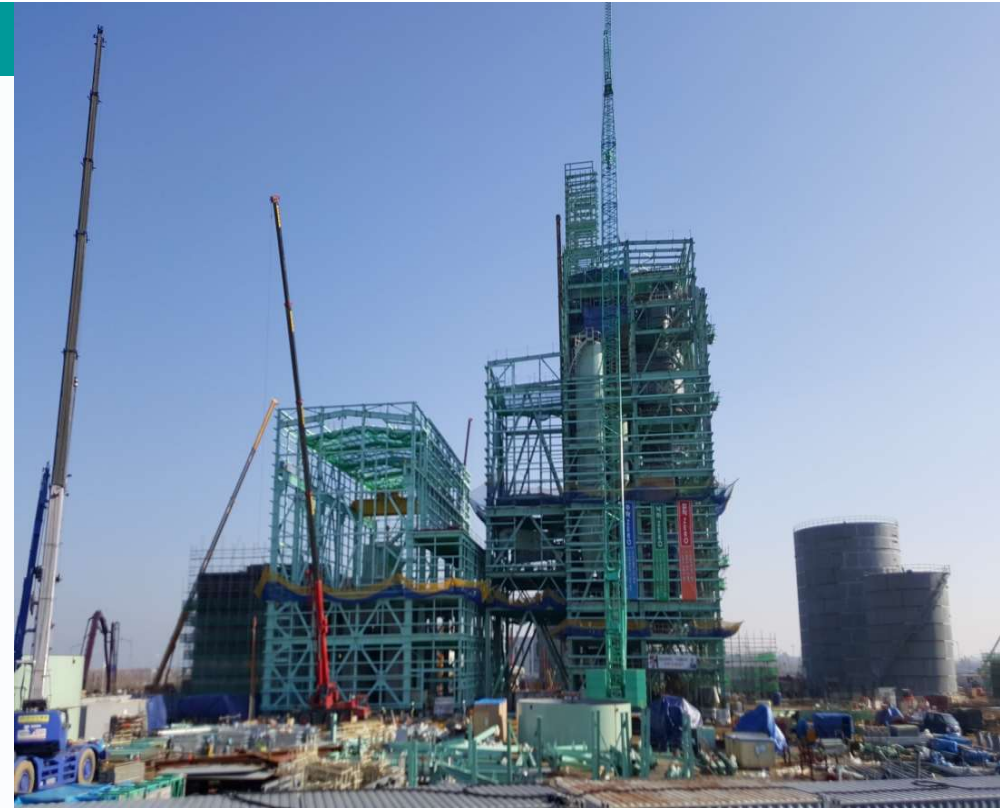
OWNER	PROJECT	SERVICE	*PERFORM	AREA
 KCEM KOREA SOUTH-EAST POWER CO.	영동 화력 발전소/ #1호기 연료공급 ESCO사업	COAL HANDLING SYSTEM	EPC	KOREA
 KCEM KOREA SOUTH-EAST POWER CO.	영흥 화력 발전소/ ASH RECYCLE PLANT	ASH HANDLING SYSTEM	EPC	KOREA
 KOMIPO	WONJU GREEN COMBINED POWER PLANT	ASH HANDLING SYSTEM	EP	KOREA
 Hyundai Oilbank	현대오일뱅크 / FBC POWER PLANT #1,2,3,4	LIMESTONE HANDLING SYSTEM	EPC	KOREA
 GJEC 군장에너지(주)	GE#3 COAL FIRED STEAM POWER PLANT	LIMESTONE HANDLING SYSTEM	EPC	KOREA
 STX Heavv Industries	CHILE CENTRAL BOCAMINA #1 POWER PLANT	LIMESTONE HANDLING SYSTEM	EP	CHILE
 HANGLAS	PETRO COKE POWER PLANT	MATERIAL HANDLING SYSTEM	EPC	KOREA
 POSCO 포스코건설	KHABAT THERMAL POWER PLANT #1,2	LIMESTONE HANDLING SYSTEM	EP	IRAQ
 SME 석문에너지	석문 집단에너지 발전사업	ASH HANDLING SYSTEM	EP	KOREA
 한국지역난방공사	광주전남 집단에너지 발전사업	ASH HANDLING SYSTEM	EPC	KOREA
성림 에너지(주)	논산.신호.화전 산업단지 발전사업	ASH HANDLING SYSTEM	EPC	KOREA
 DAELIM Best Value, Better Life	포승집단에너지 발전사업	ASH HANDLING SYSTEM	EP	KOREA
 eTEC 이테크건설	새만금 에너지 발전사업	ASH HANDLING SYSTEM	EPC	KOREA



석문국가산업단지 화력발전 플랜트

SPECIFICATION

- 취급원료 : For Fly Ash, Bottom Ash, Limestone, Sand, Bed Material Powder
- 용량 : 1 x 38.9 MWe
- 수행 : - Ash Handling System
- Limestone Handling System
- Sand Handling System
- 주 구성품 : - Bottom Ash Cooling System
- Mechanical Conveying System
- Dust Collecting System
- Bottom Ash Pneumatic Conveying System
- Bottom Ash Storage System
- Bottom Ash Wet/Dry Unloading System
- Electric & Control System





포승 산업단지 화력발전 플랜트

발전플랜트 대표 실적

SPECIFICATION

- 취급원료** : For Fly Ash, Bottom Ash, Limestone, Sand, Bed Material Powder
- 용량** : 1 x 43 MWe
- 수행** : - Ash Handling System
- Limestone Handling System
- Sand Handling System
- 주 구성품** : - Bottom Ash Cooling System
- Mechanical Conveying System
- Dust Collecting System
- Bottom Ash Pneumatic Conveying System
- Bottom Ash Storage System
- Bottom Ash Wet/Dry Unloading System
- Electric & Control System



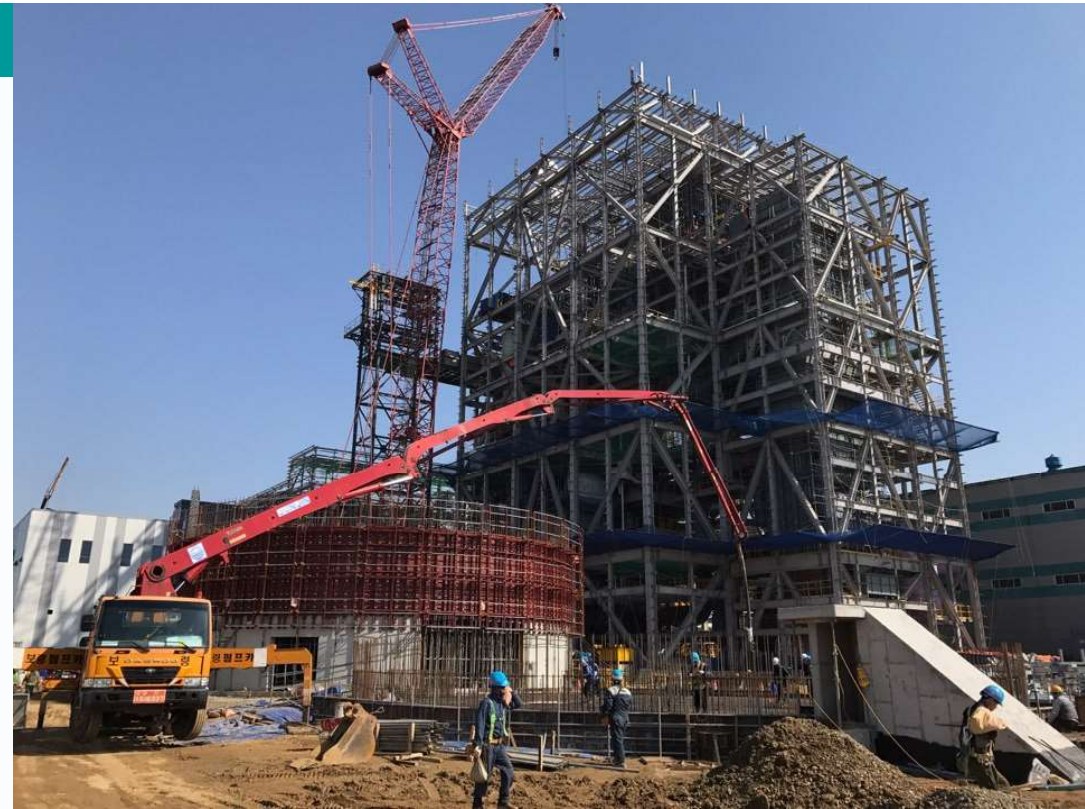


광주전남 집단에너지 화력발전 플랜트

발전플랜트 대표 실적

SPECIFICATION

- 취급원료** : For Fly Ash, Bottom Ash, Limestone, Sand, Bed Material Powder
- 용량** : 1 x 20 MWe
- 수행** : - Ash Handling System
- Limestone Handling System
- Sand Handling System
- 주 구성품** : - Bottom Ash Cooling System
- Mechanical Conveying System
- Dust Collecting System
- Bottom Ash Pneumatic Conveying System
- Bottom Ash Storage System
- Bottom Ash Wet/Dry Unloading System
- Electric & Control System





현대오일뱅크 대산 화력발전 플랜트

SPECIFICATION

- 취급원료 : For Limestone Powder
- 용량 : 2 x 25 t/h
- 수행 : - Limestone Handling System
- 주 구성품 : - Transporter Assembly
- Dome Valve Assembly
- Pneumatic Conveying Piping
- Dust Collection System
- Limestone Storage Silo
- Air Fluidizing System
- Electric & Control System



**발전플랜트
기타 실적**



5 현대 오일뱅크 대산
Limestone Handling System
20 t/h x 2 Line



1 Iraq Khabat Power Plant
Limestone Handling System
Gypsum Handling System

2 Han Glass
Petro Coke Handling System



6 부산 성림에너지발전소
ASH Handling System
EP Project



3 HAN GLASS
Petro Coke Handling System



4 현대오일뱅크 대산 #5
Limestone Handling System

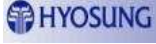













7 영동화력 발전소
PC Handling System
EP Project





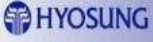


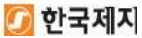



Reference in Industrial Plant

* PERFORM E :Engineering P : Procurement C : Construction

OWNER	PROJECT	SERVICE	AREA	PERFORM
 HYOSUNG	No.1 OPTICAL FILM PLANT	RAW MATERIAL HANDLING SYSTEM	울산	EPC
 HONAM PETROCHEMICAL CORP.	W/C COMPOUND PLANT	PNEUMATIC CONVEYING SYSTEM	여수	PE
 3M	CARBON MASK PLANT	AUTO FEEDING SYSTEM	화성	EPC
 한국식품	SUGAR MIXING PLANT	FLUIDIZING SYSTEM	진천	EP
 아세아제지	STARCH POWDER PLANT	PNEUMATIC CONVEYING SYSTEM	청원	EPC
 LAFARGE 라파즈석고보드	PLASTERBOARD PLANT	DUST COLLECTING SYSTEM	울산	EPC
 SK E&C	CERAMIC PLANT	RAW MATERIAL HANDLING SYSTEM	서울	EPC
 DAELIM Best Value, Better Life	ARABIAN VINYL PROEJECT	DUST COLLECTING SYSTEM	FOB	EP
 MOORIM	ADDITIVE POWDER PLANT	PNEUMATIC CONVEYING SYSTEM	평택	EPC
 SAMSUNG 삼성물산	NaCN POWDER PLANT	PNEUMATIC CONVEYING SYSTEM	서울	E
 HYOSUNG	PET FILM PROJET	PNEUMATIC CONVEYING SYSTEM	구미	EPC
 3M	ATI MASKER PLANT	AUTO FEEDING SYSTEM	화성	EPC

Reference in Industrial Plant

* **PERFORM** E :Engineering P : Procurement C : Construction

OWNER	PROJECT	SERVICE	AREA	*PERFORM
	MINERAL BOARD PLANT	PNEUMATIC CONVEYING SYSTEM	김천	EPC
	CEMENT PLANT	PNEUMATIC CONVEYING SYSTEM	장성	EPC
	No.2 OPTICAL FILM PLANT	RAW MATERIAL HANDLING SYSTEM	오창	EPC
	ATH POWDER PLANT	PNEUMATIC CONVEYING SYSTEM	울산	EPC
	EEPE Project	VACUUM CLEANING SYSTEM	이집트	EP
	STARCH POWDER SYSTEM	SEA BAG UNLOADING SYSTEM	시흥	EPC
	CPVC PROJECT	PNEUMATIC CONVEYING SYSTEM	태국	EP
	POK-1 PROJECT	PNEUMATIC CONVEYING SYSTEM	울산	EPC
	SAN / ABS COMP' PLANT	MATERIAL HANDLING SYSTEM	구미	EPC
	NPS PROJECT	PNEUMATIC CONVEYING SYSTEM	여수	EP
	CPVC PROJECT	PNEUMATIC CONVEYING SYSTEM	울산	EPC



Hyosung Optical Film Plant

SPECIFICATION

- Material** : For coarse and fine powders,
as well as granules
-
- Capacity** : 0.1 to 20 ton/hr
-
- Application** : - Raw Material Storage Silo System
- Pneumatic Conveying System
- Product Weighing System
-
- Major Component** : - TAC Storage Silo with Compressor
- Fluff Storage Silo With Fan
- Silo Discharger with Circle Feeder
- Dense Phase Pneumatic Conveying System
- Dilute Phase Pneumatic Conveying System
- Piping & Duct
- Electric & Control System





Hyosung PET Film Plant

SPECIFICATION

- Material** : For coarse and fine powders,
as well as granules
-
- Capacity** : 0.1 to 20 ton/hr
-
- Application** : - Raw Material Storage Silo System
- Pneumatic Conveying System
- Product Weighing System
-
- Major Component** : - Pet Storage Silo with Compressor
- Fluff Storage Silo With Fan
- Silo Discharger with Circle Feeder
- Dense Phase Pneumatic Conveying System
- Dilute Phase Pneumatic Conveying System
- Piping & Duct
- Electric & Control System





TTCL CpvC Plant Project

SPECIFICATION

- Material** : For coarse and fine powders,
as well as granules
-
- Capacity** : 0.1 to 10 ton/hr
-
- Application** : - Raw Material Storage Silo System
- Pneumatic Conveying System
- Product Weighing System
-
- Major Component** : - CpvC Storage Silo with Compressor
- Dust Collector with Blower
- Silo Discharger with Circle Feeder
- Dense Phase Pneumatic Conveying System
- Dilute Phase Pneumatic Conveying System
- Piping & Duct
- Electric & Control System





Artificial Light Plant Project

SPECIFICATION

Material : For coarse and fine powders,
as well as granules

Capacity : 0.1 to 50 ton/hr

Application : - Raw Material Storage Silo System
- Pneumatic Conveying System
- Product Weighing System

Major Component : - CpvC Storage Silo with Compressor
- Dust Collector with Blower
- Silo Discharger with Circle Feeder
- Dense Phase Pneumatic Conveying System
- Dilute Phase Pneumatic Conveying System
- Piping & Duct
- Electric & Control System





NPK ABS Compounding Plant

SPECIFICATION

- Material** : For coarse and fine powders,
as well as granules
-
- Capacity** : 0.1 to 10 ton/hr
-
- Application** : - Raw Material Storage Silo System
- Pneumatic Conveying System
- Product Weighing System
-
- Major Component** : - SAN/DP Storage Silo with Compressor
- Dust Collector with Blower
- Silo Discharger with Circle Feeder
- Dense Phase Pneumatic Conveying System
- Dilute Phase Pneumatic Conveying System
- Piping & Duct
- Electric & Control System



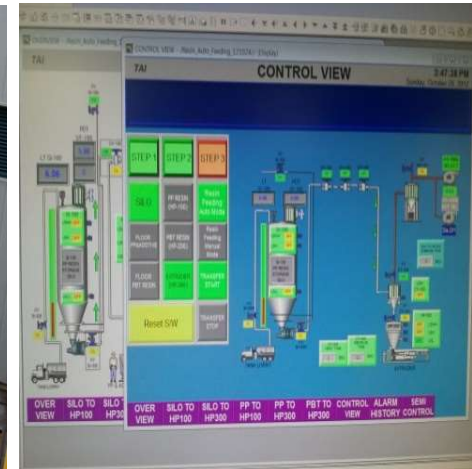


3M, PP Masker Plant

산업플랜트 주요실적

SPECIFICATION

- Material** : For coarse and fine powders,
as well as granules
-
- Capacity** : 0.1 to 10 ton/hr
-
- Application** : - Raw Material Storage Silo System
- Pneumatic Conveying System
- Product Weighing System
-
- Major Component** : - PP Storage Silo with Compressor
- Dust Collector with Blower
- Silo Discharger with Circle Feeder
- Dense Phase Pneumatic Conveying System
- Dilute Phase Pneumatic Conveying System
- Piping & Duct
- Electric & Control System



산업플랜트
기타 실적



1

1 HYOSUNG

PP Film Plant

2 KOLON

Nylon Handling System

3 HYOSUNG

PET Film Plant

4 DUPONT

ATH Powder Plant

5 Mu Lim Paper

Starch Power Handling System

6 KOREA CEMENT

Dense Phase Pneumatic Conveying System

7 EGYPT

Vacuum Cleaning System, Export



2



3



4



5



6



7

**산업플랜트
기타 실적**



1 CORPERION
POLYKETONE Plant

5 STOLBERG
Mold Flux Plant

2 HANWHA CHEMICAL
Cpvc Plant Project

3 3M
PET Film Plant







4 ASIA PAPER
Starch Power Unloading System

6 KOREA PAPER TECH.
Starch Power Unloading System



Reference in Food Plant

* **PERFORM** E :Engineering P : Procurement C : Construction

OWNER	PROJECT	SERVICE	PRODUCT	AREA	PERFORM
	SUGAR MIXING PLANT	- PNEUMATIC TRASPORTER - MIXING SYSTEM - STRUCTURE & PIPING	SUGAR	KOR.	EPC
	PNEUMATIC CONVEYING SYSTEM	- PNEUMATIC TRASPORTER - SILO & BAG FILTER - STRUCTURE & PIPING	GRAM FLOUR	KOR.	EPC
	REMODLING PROJECT FOR EXISTING PLANT	- PNEUMATIC TRASPORTER - SILO & BAG FILTER - STRUCTURE & PIPING	ADDITIVE	KOR.	EPC
	FOOD PLANT	- PNEUMATIC TRASPORTER - SILO & BAG FILTER - STRUCTURE & PIPING	BEAN	KOR.	EPC
	POWDER MIXING SYSTEM	- FLOUR ADDITIVE SYSTEM	ADDITIVE	KOR.	EPC
 아세아제지	PAPER PLANT	- VENTURI EJECTOR PKG - SILO & BAG FILTER - STRUCTURE & PIPING	STARCH	KOR.	EPC

식품 플랜트
주요 실적



1



2



3



4



1 MILDAWON
Remodeling for existing Plant

4 OTTOGI
Flour Pneumatic Conveying System

2.PULMUONE
Coffee Bean Handling System

3 DONGSUH
Sugar Mixing Plant




5 ASIA PAPER
Starch Power Unloading System



5

이차전지 플랜트
실적 리스트

* **PERFORM E** :Engineering **P** : Procurement **C** : Construction

OWNER	PROJECT	MATERIAL	SERVICE	AREA	PERFORM
 <small>에코프로 BM</small>	CAM1 PILOT PLANT	양극재	BULK SOLID HANDLING SYSTEM	KOREA	EPC
 <small>에코프로 BM</small>	CAM4 ACM PROJECT	양극재	BULK SOLID HANDLING SYSTEM	KOREA	EPC
 <small>에코프로 BM</small>	CAM4N ENGINEERING	양극재	ENGINEERING WORK	KOREA	E
 <small>에코프로 BM</small>	CAM4N 분체설비	양극재	BULK SOLID HANDLING SYSTEM	KOREA	PC
	SECONDARY CELL PLANT	CELL	BULK SOLID HANDLING SYSTEM	KOREA	E
 <small>에코프로 지이엠</small>	전구체 이송설비	전구체	BULK SOLID HANDLING SYSTEM	KOREA	EPC
 <small>에코프로 BM</small>	CAM5 ENGINNERING	양극재	ENGINEERING WORK	KOREA	E
 <small>에코프로 BM</small>	CAM5 분체설비	양극재	BULK SOLID HANDLING SYSTEM	KOREA	PC
 <small>코스모신소재(주) COSMO AM&T CO., LTD. ADVANCED MATERIALS & TECHNOLOGY</small>	PILOT PLANT	양극재	BULK SOLID HANDLING SYSTEM	KOREA	EPC
 <small>에코프로 BM</small>	CAM6 분체설비	양극재	BULK SOLID HANDLING SYSTEM	KOREA	EPC



에코프로 BM 양극재 제조플랜트

이차전지 플랜트 주요실적

SPECIFICATION

- Material** : For coarse and fine powders,
as well as granules
-
- Capacity** : 0.1 to 5 ton/hr
-
- Application** : - Raw Material Handling System
- Pneumatic Conveying System
- Product Weighing System
-
- Major Component** : - Raw Material Unloading System
- Dust Collector with Blower
- Blender Mixing System
- Product Weighing System
- Dense Phase Pneumatic Conveying System
- Dilute Phase Pneumatic Conveying System
- Piping & Duct
- Electric & Control System



지난 10여년 관심과 사랑에
“고개 숙여 감사의 인사를 드립니다”



B T S E N G
Bulk handling Technical Solution

www.btseng.com

본사

서울특별시 금천구 디지털로 130,
#914 (가산동 남성프라자)
Phone 02-867-6785
Fax 02-867-6786
Email sales@btseng.com

공장

충청북도 음성군 음성읍
한별리 708-1

기술연구소

충청북도 음성군 음성읍
한별리 708-1

베트남 지사

64 Nguyen Dinh Chieu, Dakao Ward,
Distric1, Ho Chi Min City, Vietnam